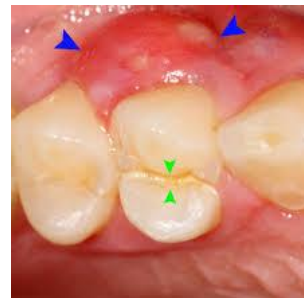


## What is a pulp

The pulp chamber is the soft area within the center of the tooth where the nerve lies within the roots. The root canals travel from the tip of the tooth's root into the pulp chamber, the pulp chamber contains blood vessels and connective tissue that nourish the tooth.

When the pulp is damaged it breaks down and bacteria multiply within it. This bacteria can cause an abscess. An abscess is a pus-filled pocket which forms at the end (apex) of the root. Evidence of an abscess include swelling of the face, neck, or head.



## Root Canal

Root canal therapy is a treatment used to repair and save a tooth that is badly decayed or infected. When the infection is severe enough to involve the nerve and pulp a root canal procedure must be performed.

During a root canal procedure, the nerve and pulp are removed, and the inside of the tooth is cleaned and sealed.

**LAFAZANOS  
DENTAL**



